



**SECTOR 1**

±10.13

±9.60

±8.32

±8.52

C2

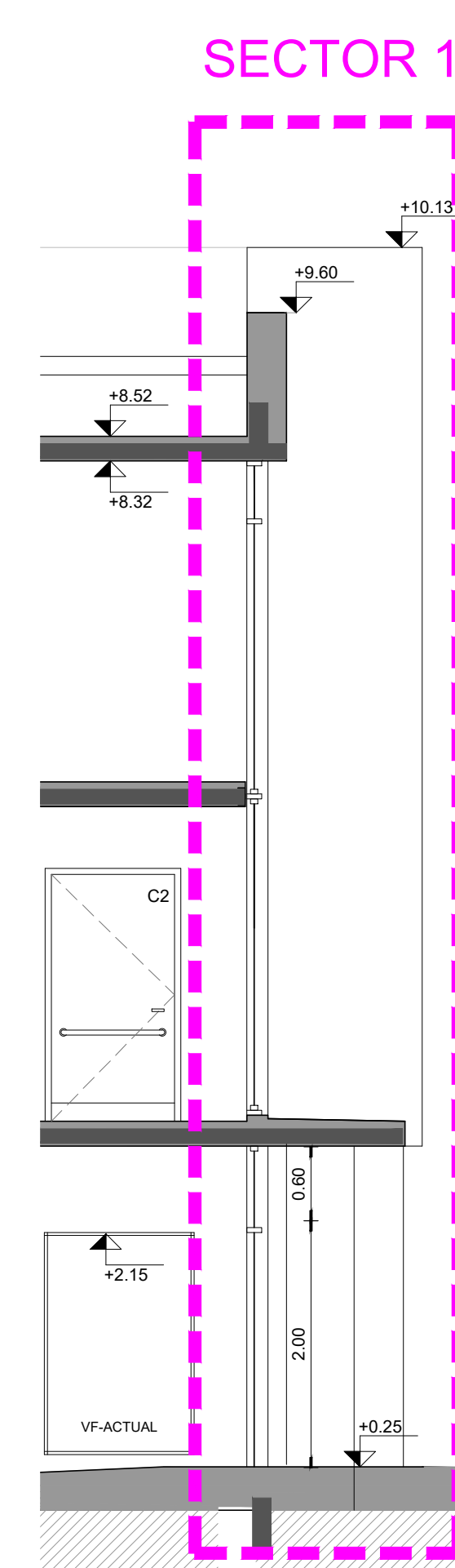
±2.15

VF ACTUAL

2.00

0.08

±5.25



Architectural section drawing of a building interior. The drawing shows a staircase with a height of 2.83 and a width of 2.83. The floor is labeled "pavimentose passa a porcelanato pulido". The ceiling is labeled "SECRETARIA GRAL.". A dashed pink line indicates a section cut. Dimensions include 0.38 for the floor thickness and 0.03 for the ceiling thickness.

<b>Intendencia de Canelones / D.G.G.T.</b>		
Proyecto:	Reforma Junta Departamental Ciudad de Canelones	
PLANO:	CORTES - ALBANILERÍA	ETAPA: Licitación Abreviada 2024
	ESC. 1:50	LAMINA: A-0